



The **AnalyST**

St. Tammany Corporation's Economic Research Publication

4th Quarter 2021

Snapshot: Impacts of COVID-19 on St. Tammany

*16 charts and graphs that show how
St. Tammany's community and economy have
been changed by COVID-19 throughout
2020 and 2021*



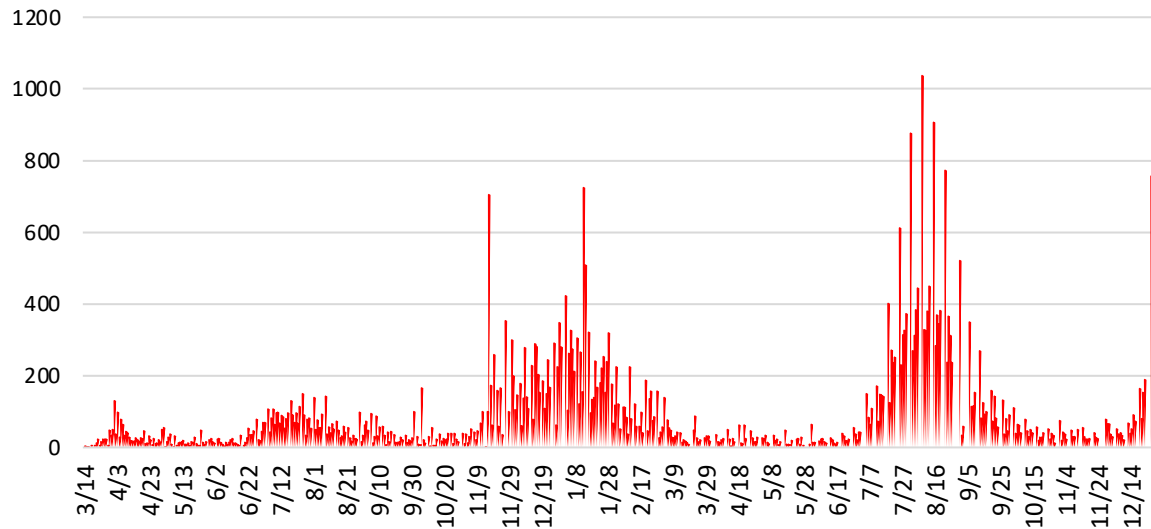
COVID-19 in St. Tammany

Total Cases

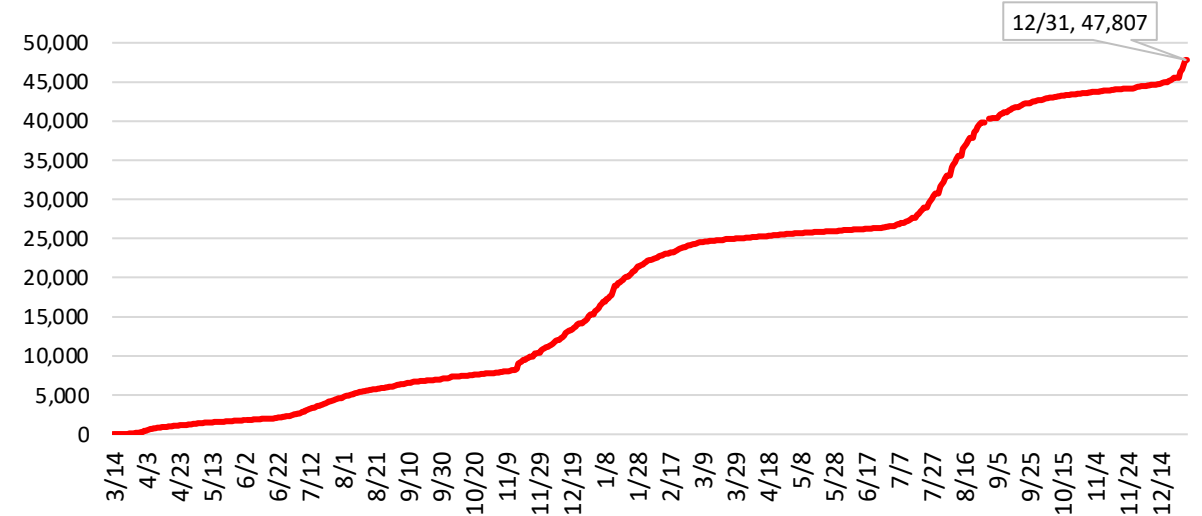
As of December 31, 2021:

- **47,807** total probable + confirmed cases
- **622,326** total tests

St. Tammany Daily Increases in COVID-19 Cases



St. Tammany Cumulative COVID-19 Cases



- 4th quarter average number of daily cases: **57** or 22 positive cases per 100,000 people

Source: Louisiana Department of Health; St. Tammany Corporation Analysis

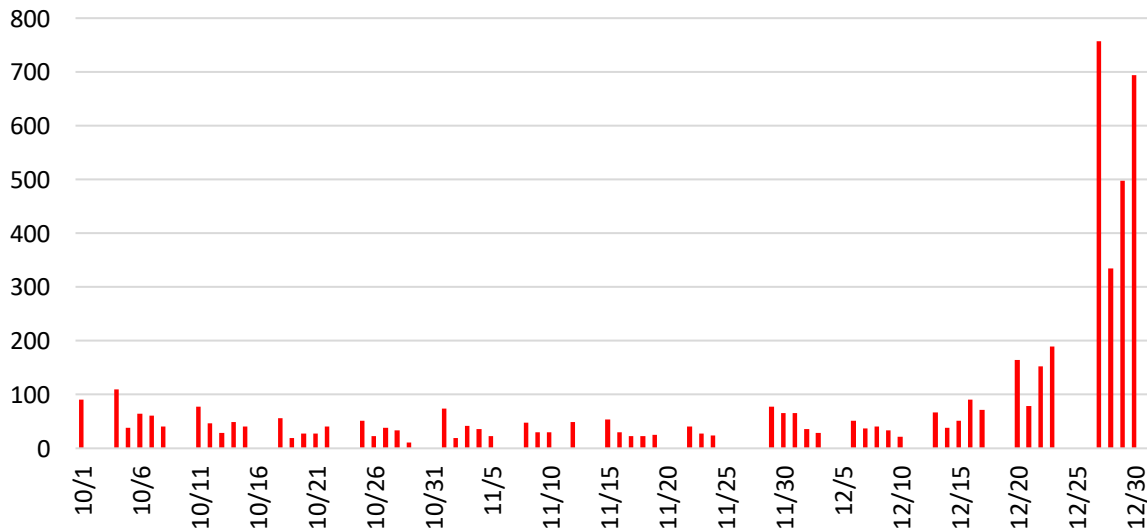


COVID-19 in St. Tammany

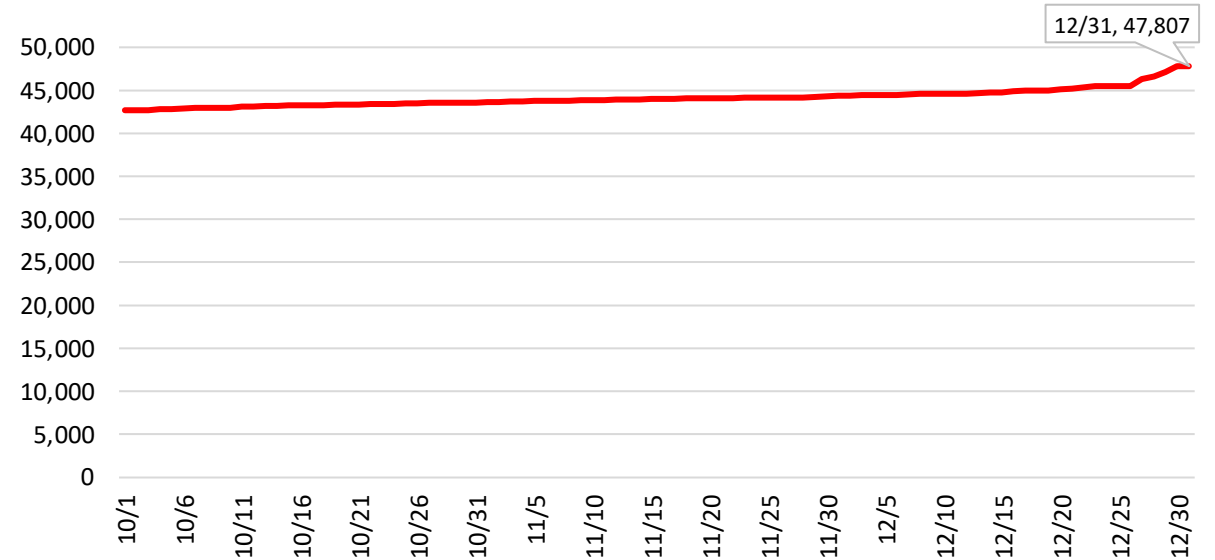
4th Quarter Cases

- During the 4th quarter alone, total cases rose by **5,212**
- There were an average of **57** new cases each day

St. Tammany Daily Increases in COVID-19 Cases – Q4 2021



St. Tammany Cumulative COVID-19 Cases – Q4 2021



- However, during **December**, that number **nearly doubled** compared to October and November, spiking to an average of **113** new cases per day as the Omicron variant became the dominant viral strain.

Source: Louisiana Department of Health; St. Tammany Corporation Analysis

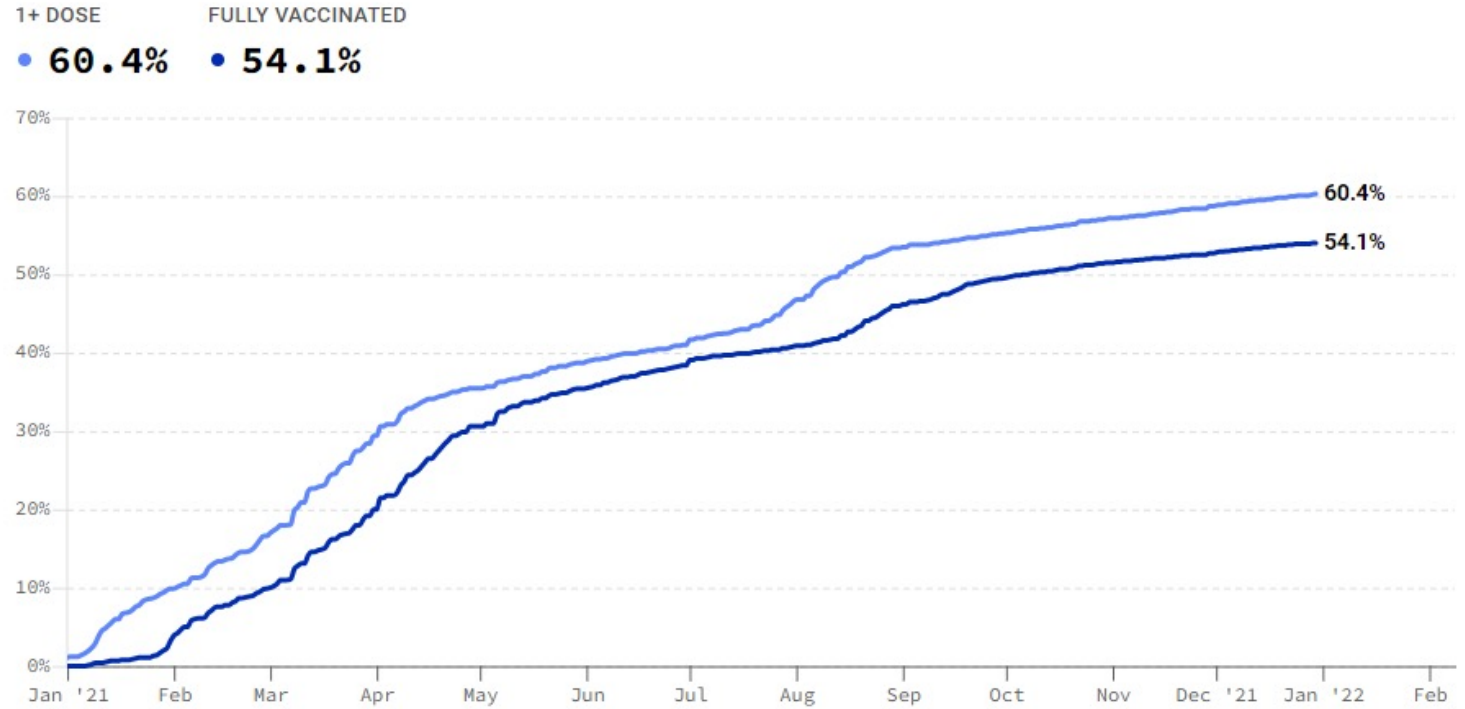


COVID-19 in St. Tammany

Vaccinations

As of December 31, 2021:

- **152,932** first doses of the COVID-19 vaccine have been administered.
 - **139,665** second doses have been administered.
- **60.4%** of the population has received at least one dose of the two-part vaccine.
 - **54.1%** of the population has received both doses.
- St. Tammany has the **8th** highest vaccination rate in the state.
- Louisiana ranks **45th** out of 50 states in vaccination percentage.
- All Louisianans age 5 and older are eligible to be vaccinated.



Source: Louisiana Department of Health; St. Tammany Corporation Analysis



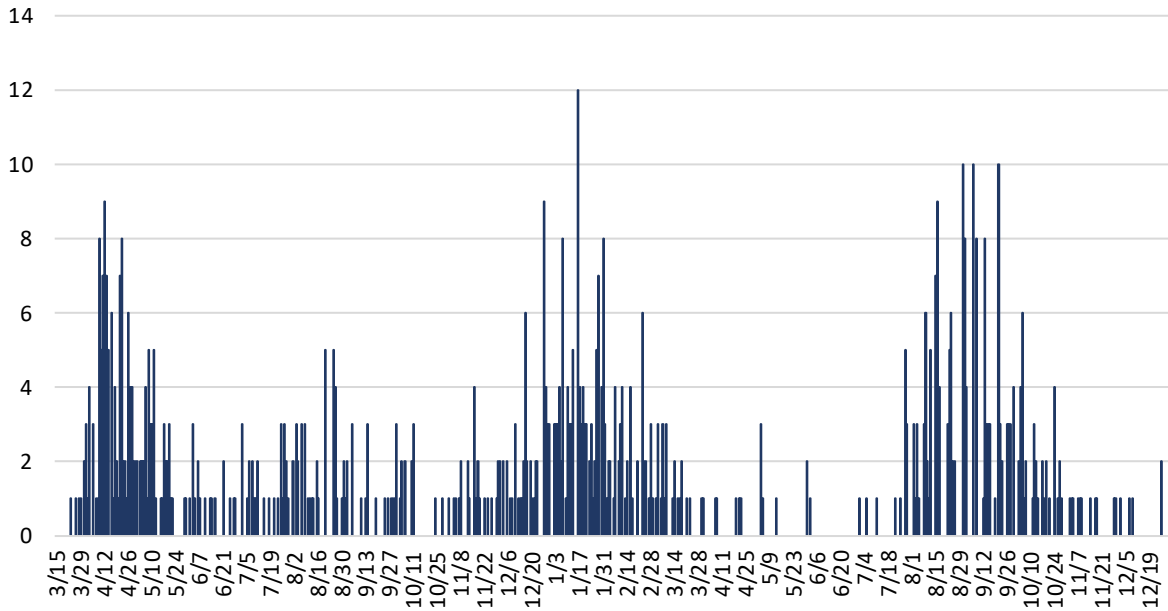
COVID-19 in St. Tammany

Total Mortality

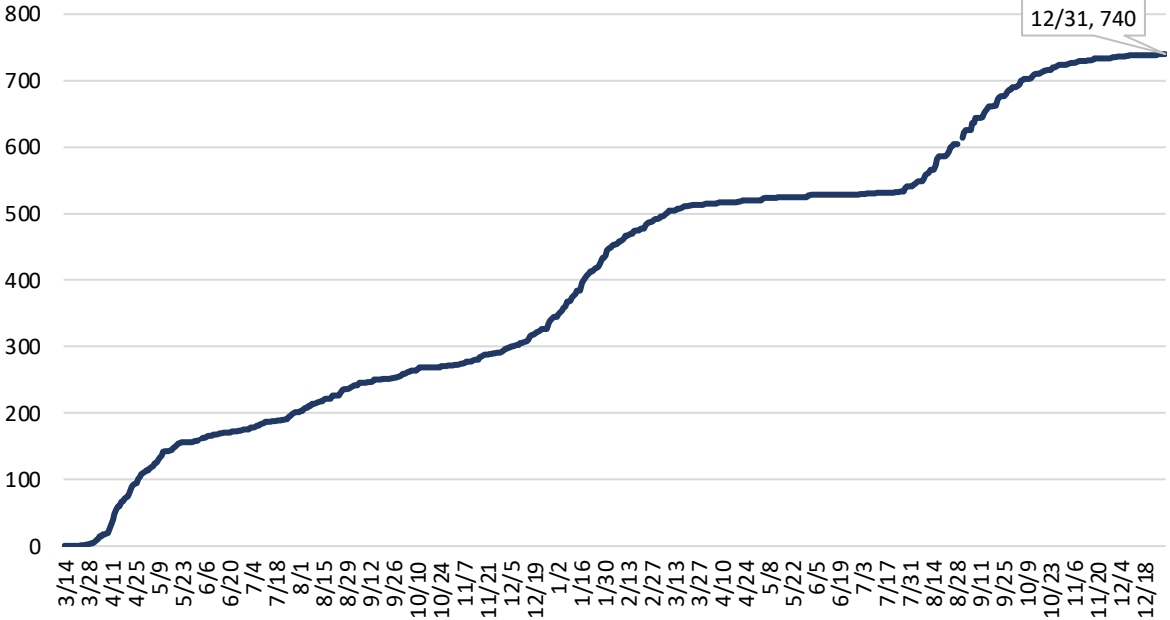
As of December 31, 2021:

- **740** deaths (690 confirmed + 50 probable)
- **1.5%** mortality rate (deaths as a proportion of confirmed cases).

Daily COVID-19 Deaths in St. Tammany Parish



Total COVID-19 Deaths in St. Tammany Parish



Demographic Breakdown				
Race	Deaths	Cases	Population (2018)	Cases per 1,000
Black	92	6,972	29,803	234
White	639	32,225	209,123	154
Other	8	2,706	13,167	206
Unknown	0	4,020	N/A	N/A

Source: Louisiana Department of Health; St. Tammany Corporation Analysis

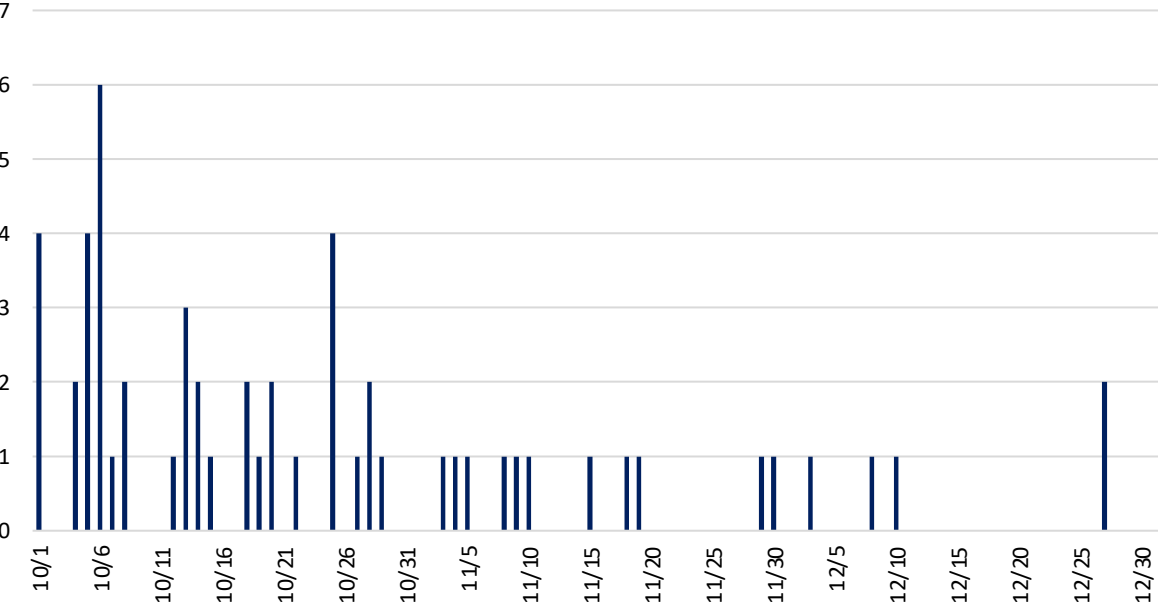


COVID-19 in St. Tammany

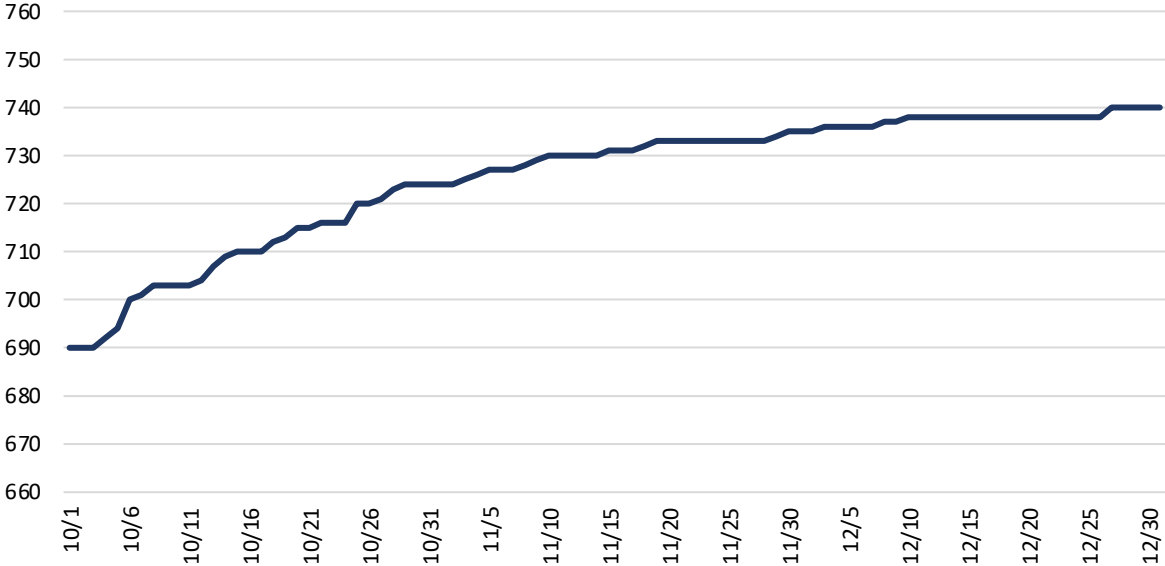
4th Quarter Mortality

- During the 4th quarter of 2021, total deaths increased by **54**.

Daily COVID-19 Deaths in St. Tammany Parish



Total COVID-19 Deaths in St. Tammany Parish



- The average number of deaths per day over the last quarter has been roughly 0.6 deaths per day, or 6 deaths every 10 days.

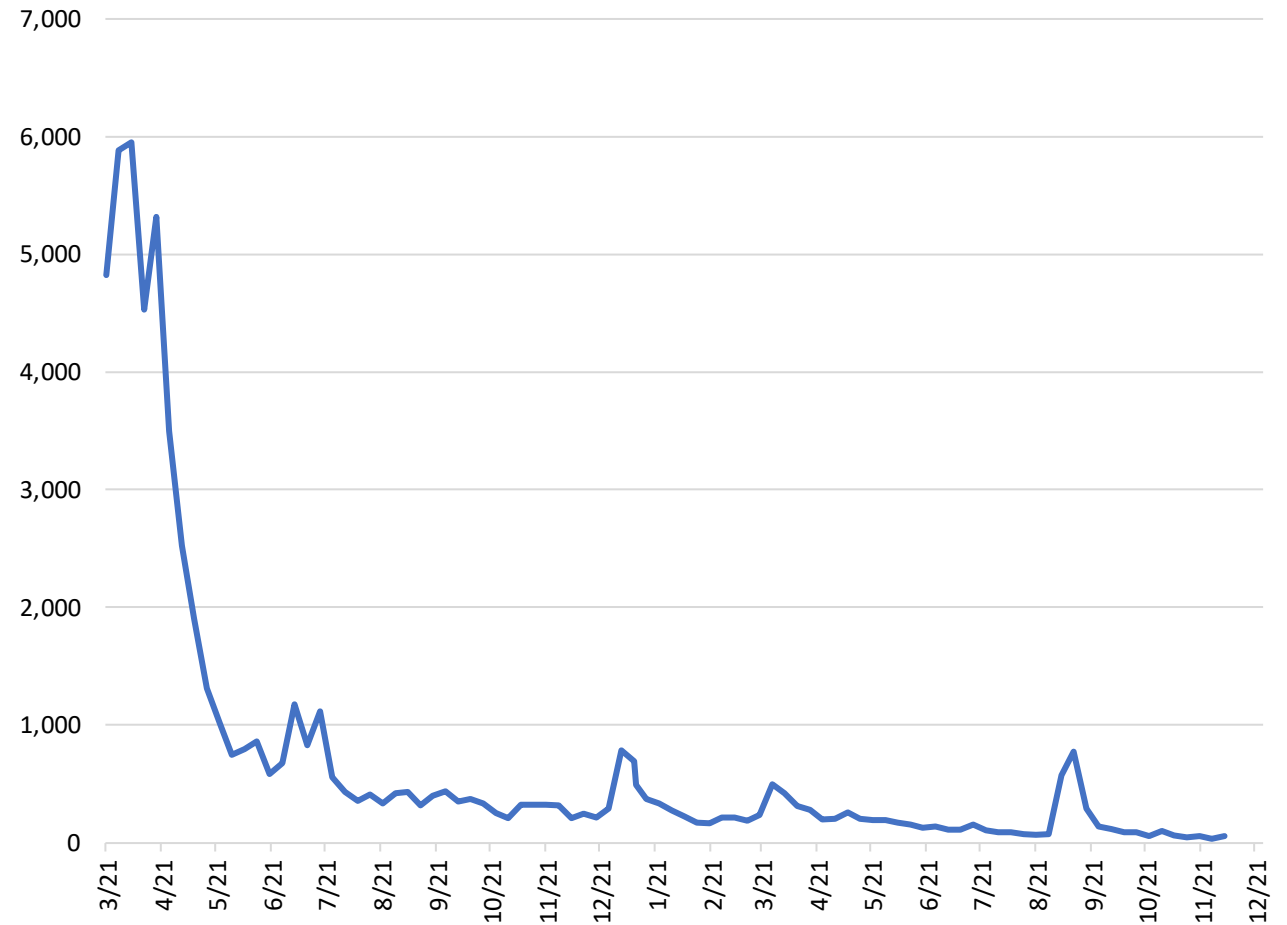
Source: Louisiana Department of Health; St. Tammany Corporation Analysis



Unemployment Claims

- Since the start of the COVID-19 pandemic, the rate of unemployment claims has steadily decreased, lowering St. Tammany's unemployment rate.
- The most recent spike in unemployment claims occurred during early- to mid-September, which was more closely related to damages associated with the aftermath of Hurricane Ida than the pandemic.

St. Tammany Initial Claims for Unemployment Insurance



Source: Louisiana Workforce Commission



Unemployment

Average number of initial claims for unemployment during Q4 2021:

63

Average number of initial claims for unemployment during Q4 2020:

290

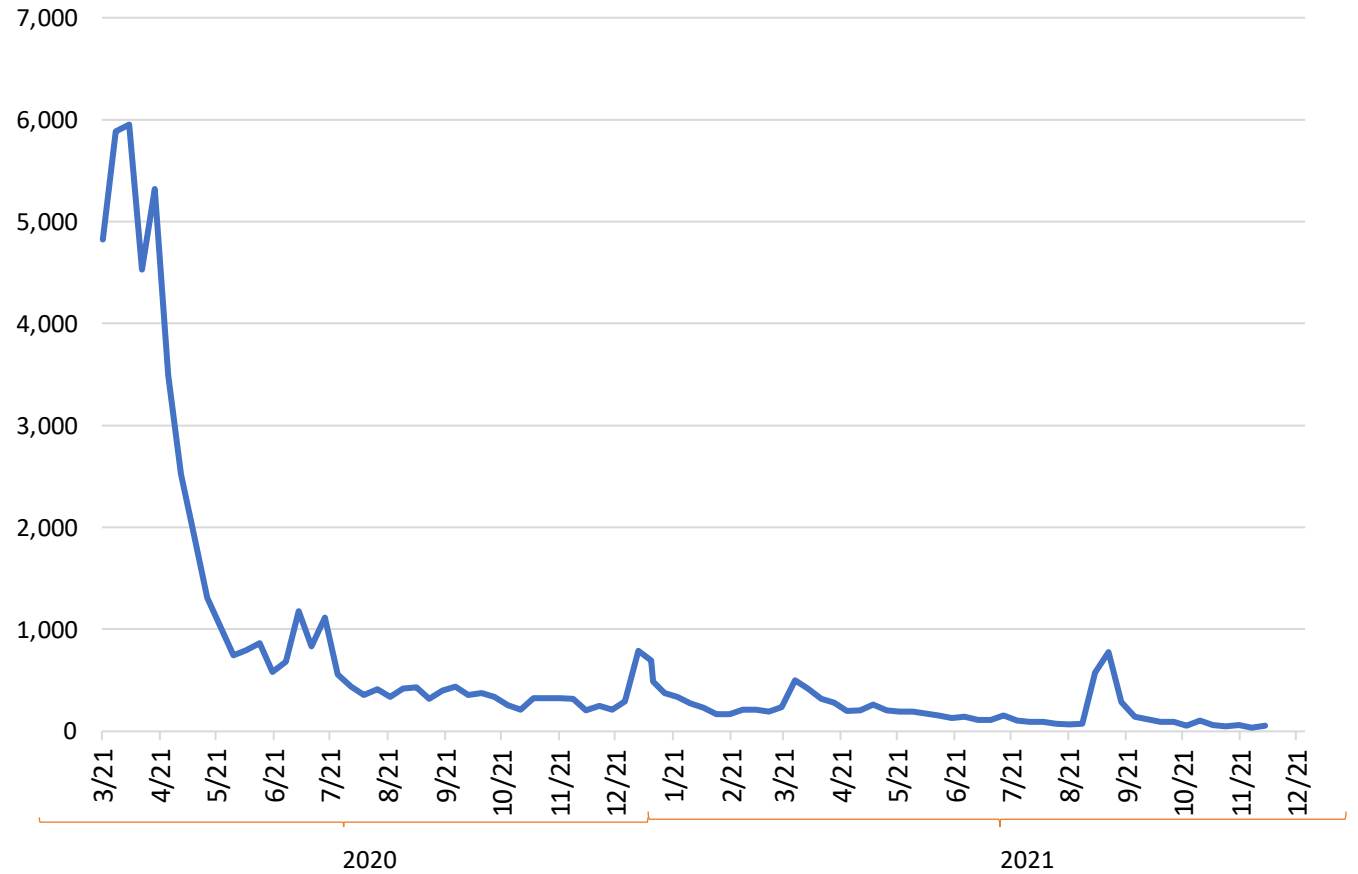
Average weekly number of initial claims, March-December 2020:

1,243

Average weekly number of initial claims in 2021 through Q4:

221

St. Tammany Initial Claims for Unemployment Insurance



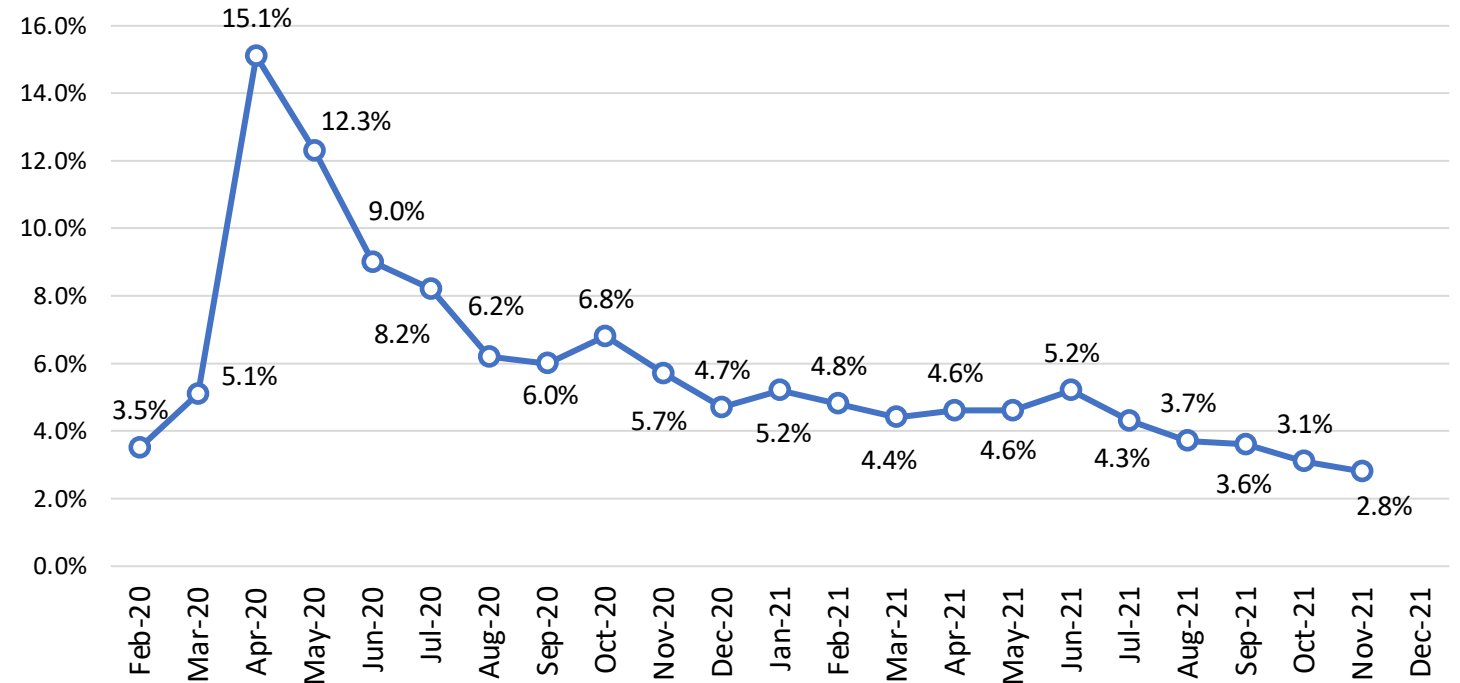
Source: Louisiana Workforce Commission



Unemployment Rate

- In the most recent jobs report, Louisiana Workforce Commission reported that St. Tammany's unemployment rate was **2.8%** in November 2021, lower than:
 - the United States rate (4.2%),
 - the Louisiana rate (5.1%),
 - and the Greater New Orleans rate (4.8%).
- November 2021 has shown the **lowest unemployment rate** since before the pandemic began (February 2020).
- In fact, November's unemployment rate is the lowest since **December 2006**, 15 years ago, when the rate was **2.7%**.

St. Tammany Unemployment Rate

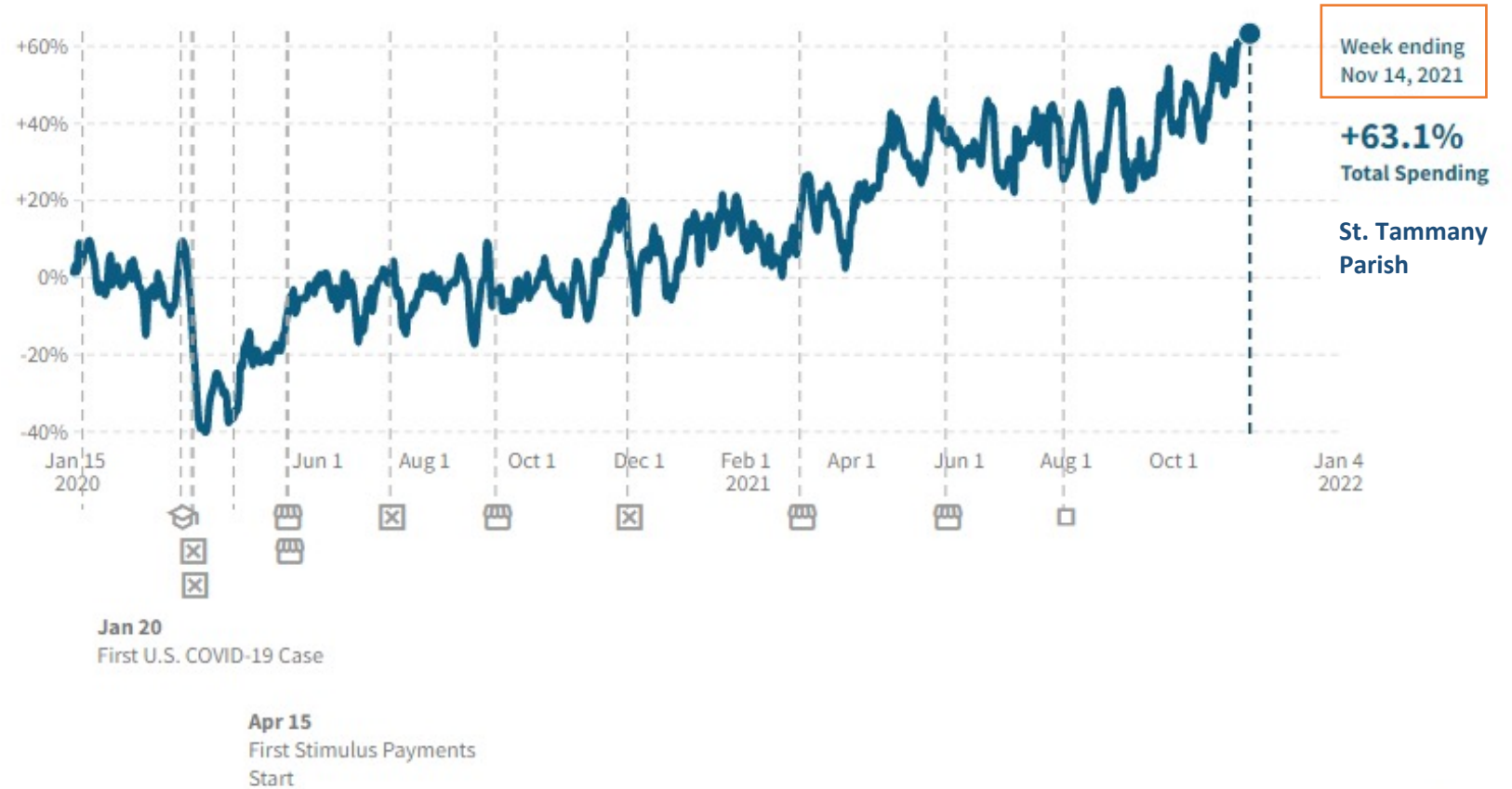


Source: Louisiana Workforce Commission; Federal Reserve of St. Louis FRED



Changes in Consumer Spending

- In St. Tammany, as of November 14, 2021, total spending by all consumers had increased by **63.1%** compared to January 2020.
- On the same day in 2020, consumer spending was **up 8.1%**.



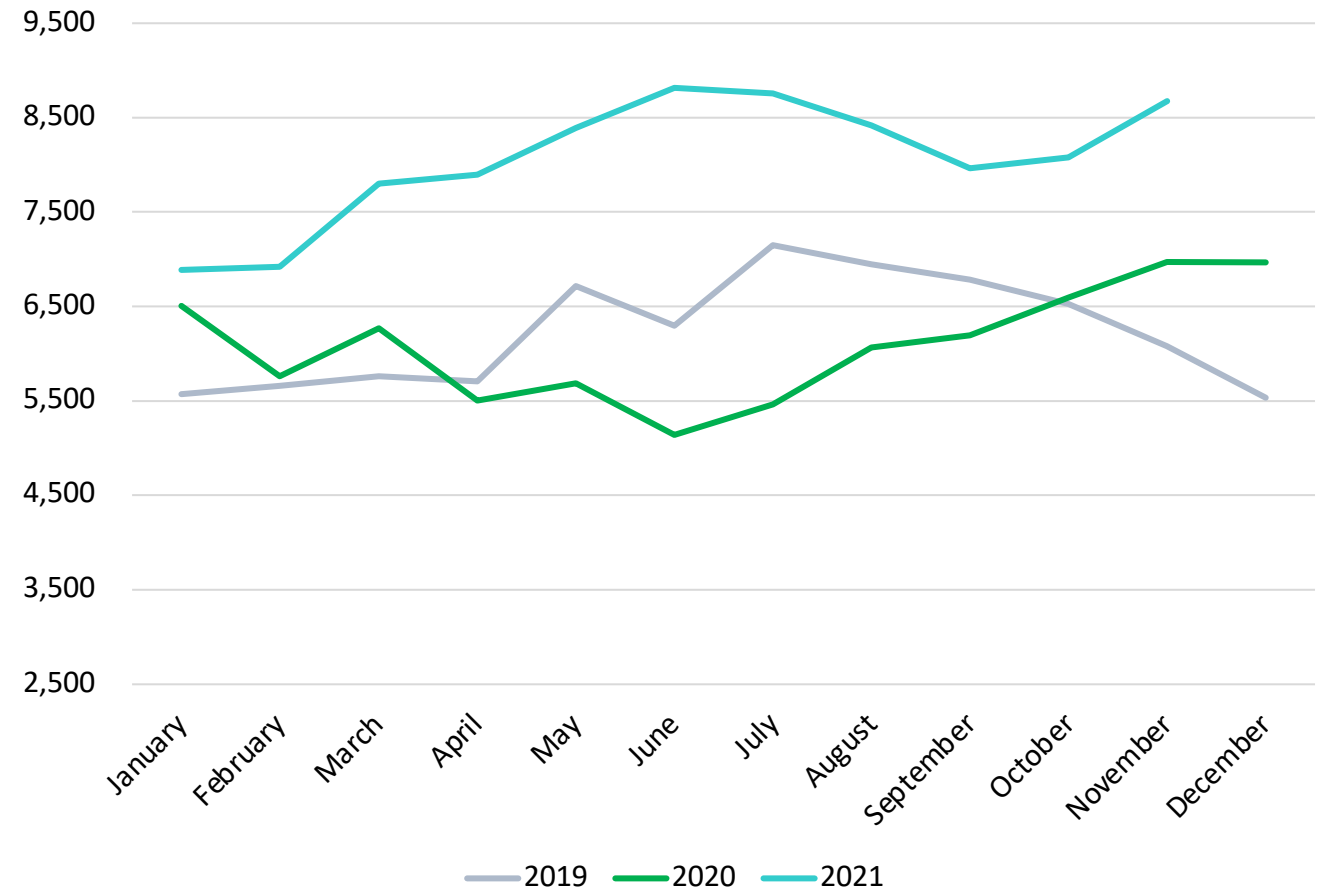
Source: Opportunity Insights Economic Tracker



Job Postings

Year-over-Year Comparison

- Throughout 2021, job postings have been higher each month than in previous years, peaking in June 2021 with 8,816 individual job postings.
- During the fourth quarter of 2021, there were an **average of 8,378** individual postings each month, which was little changed from the third quarter's monthly average of 8,380.
- Jobs in highest demand continue to be registered nurses, truck drivers, and retail salespeople.



Source: EMSI



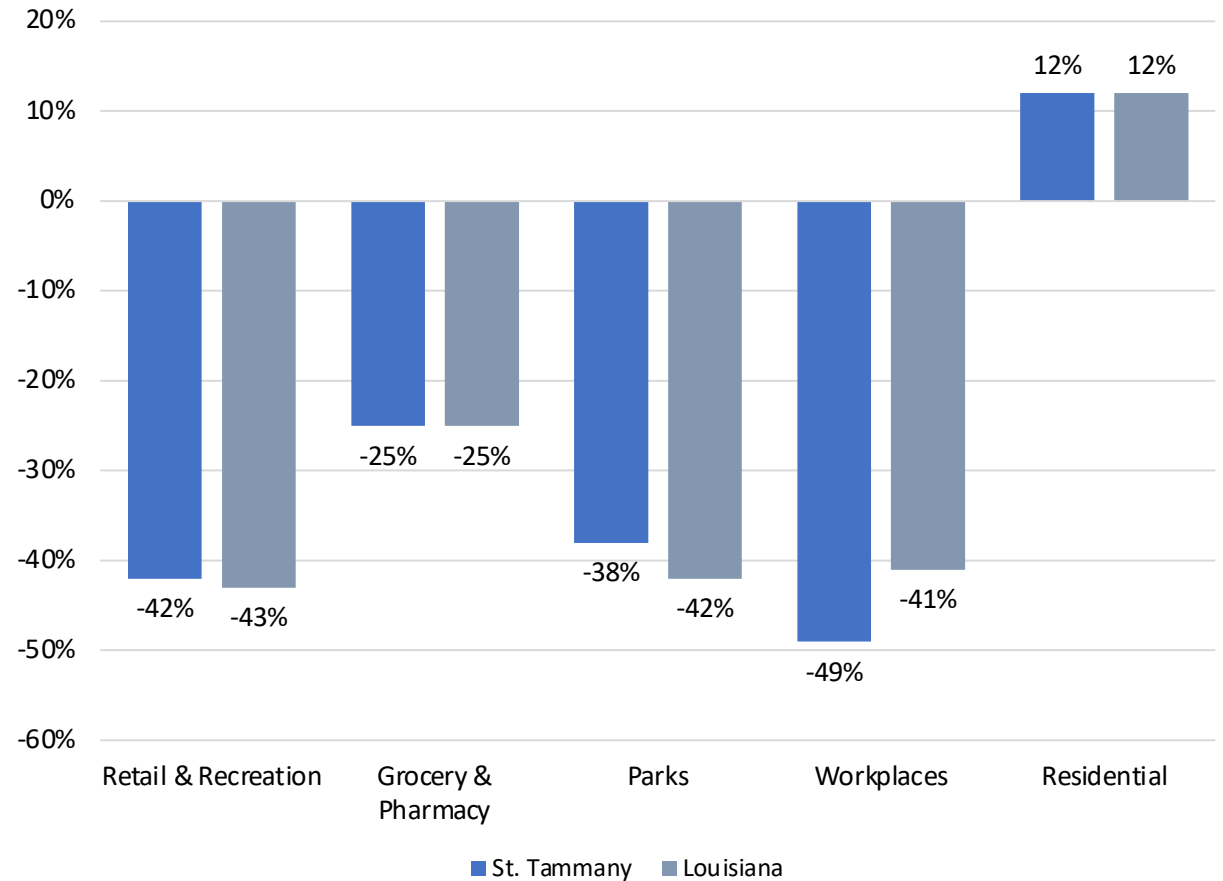
Residential Travel Since Stay-at-Home Order

Although the stay-at-home order is no longer in effect, people are still encouraged to limit their travel in order to stay safe. The purpose of the community mobility report is to give insight into key questions:

- How have travel and mobility in St. Tammany been impacted by the pandemic?
- How well has St. Tammany adhered to the stay-at-home order?
- Where are people going when they aren't going to work, going shopping, or doing leisure/entertainment activities?

Definitions:

- **Retail & Recreation:** places like restaurants, cafes, shopping centers, theme parks, museums, libraries, and movie theaters
- **Grocery & Pharmacy:** places like grocery markets, food warehouses, farmers markets, specialty food shops, drug stores, and pharmacies
- **Parks:** places like national parks, public beaches, marinas, dog parks, plazas, and public gardens
- **Workplaces:** places of work
- **Residential:** places of residence
- Negative percentages indicate reduction in travel

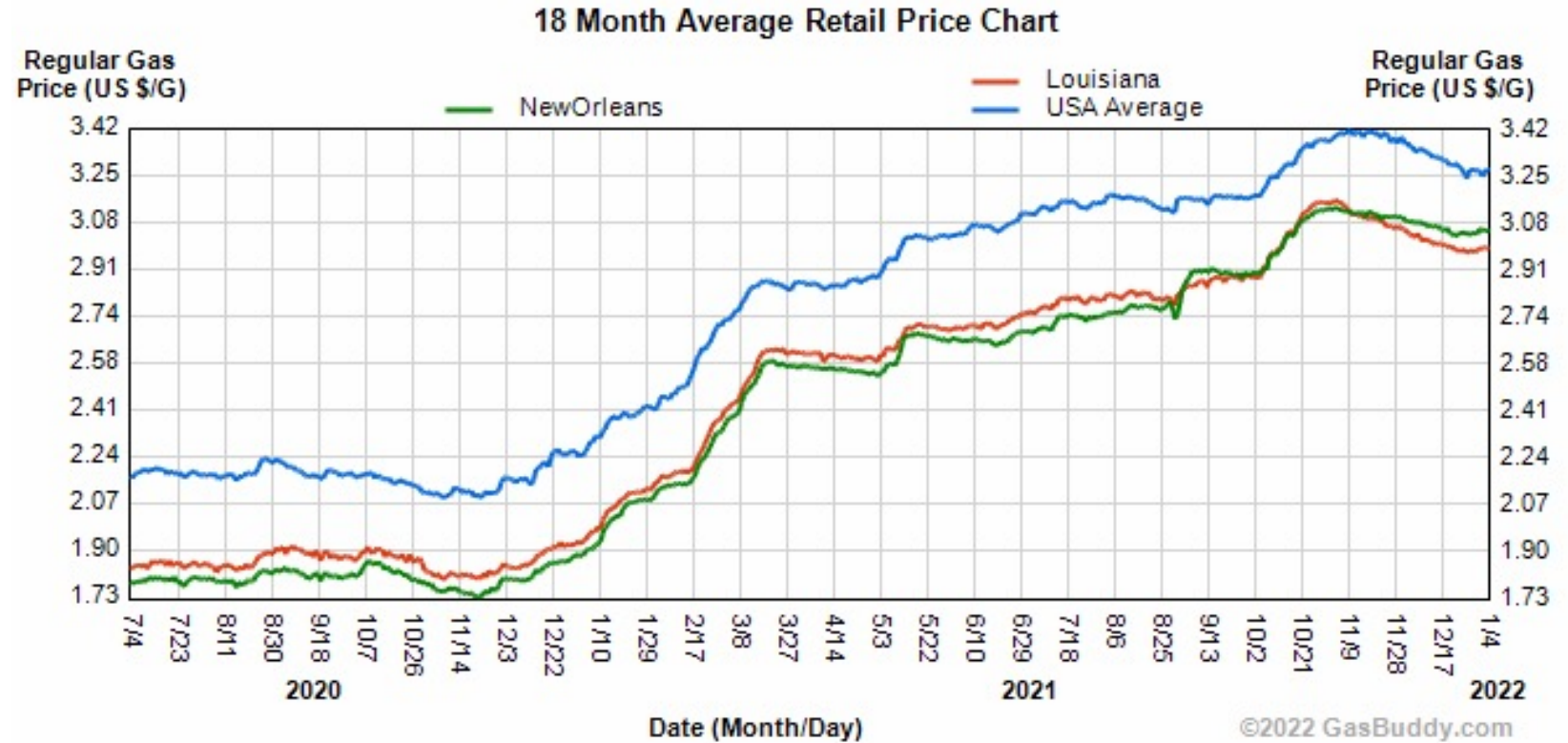


Source: Google | COVID-19 Community Mobility Report – December 2021



Gas Prices

- The graph to the right shows the average gas prices in the New Orleans metro, state, and nation over an 18-month period.
- Since the start of the COVID-19 pandemic, gas prices decreased due to low demand during stay-at-home ordinances. As the economy began to reopen, an increase in demand drove gas prices back up.



Source: GasBuddy.com



Key Takeaways

- St. Tammany Parish recorded more than 5,200 new COVID-19 cases and 54 COVID-19-related deaths during Q4 2021. Case numbers and deaths are each about one-third of the previous quarter's numbers.
- By the end of the December, 60.4% of residents age five and older have received at least one dose of the COVID-19 vaccine, a nearly 5% improvement from the previous quarter. .
- In November 2021, the most recent jobs report showed that St. Tammany's unemployment is the lowest in 15 years at 2.8%. This extraordinarily low rate is connected to the significant number of workers who have left the labor force during the pandemic, as well as the labor struggles that businesses across the country have seen in recent months.
- As the most recent strain of the COVID-19 virus, the Omicron variant, caused cases to nearly double during the month of December, it's clear that the pandemic will continue to affect workers, businesses, and our local and national economies into 2022.





**ST. TAMMANY
CORPORATION**

The Economic Development Organization for St. Tammany

The **AnalyST**

St. Tammany Corporation's economic research publication



[@StTammanyCorporation](#)



[@StTammanyCorp](#)



[StTammanyCorp.org](#)

Prepared by:

Elizabeth Lee
Research & Policy Analyst
Project Associate for Strategic Initiatives
elee@sttammanycorp.org

Catherine Walker
Research Fellow
fellow@sttammanycorp.org