



The **AnalyST**

St. Tammany Corporation's Economic Research Publication

January 2022

Snapshot: Impacts of COVID-19 on St. Tammany

*12 charts and graphs that show how
St. Tammany's community and economy have
been changed by the COVID-19 pandemic*



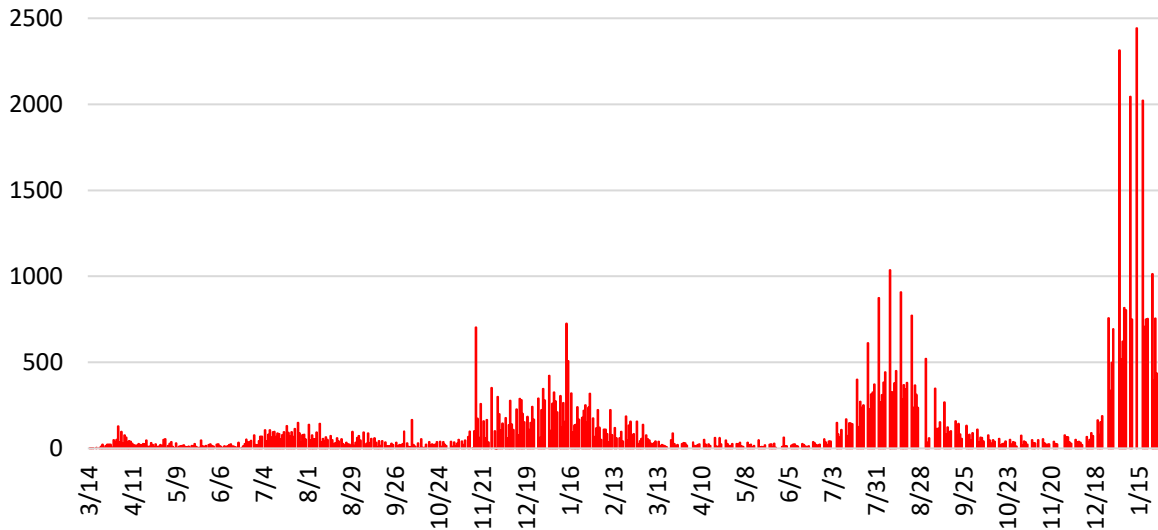
COVID-19 in St. Tammany

Total Cases

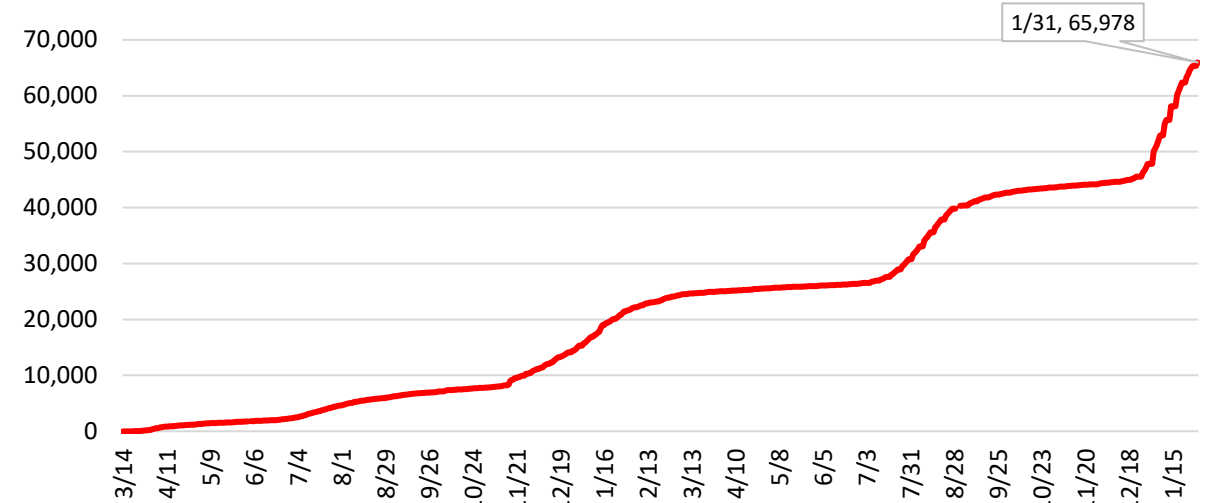
As of January 31, 2022:

- **65,978** total probable + confirmed cases
- **685,758** total tests

St. Tammany Daily Increases in COVID-19 Cases



St. Tammany Cumulative COVID-19 Cases



- Average number of daily new cases during January: **562** or 216 positive cases per 100,000 people
- Average number of daily new cases in January 2021: **203**
- This rise in average number of cases can be attributed to the Omicron variant

Source: Louisiana Department of Health; St. Tammany Corporation Analysis

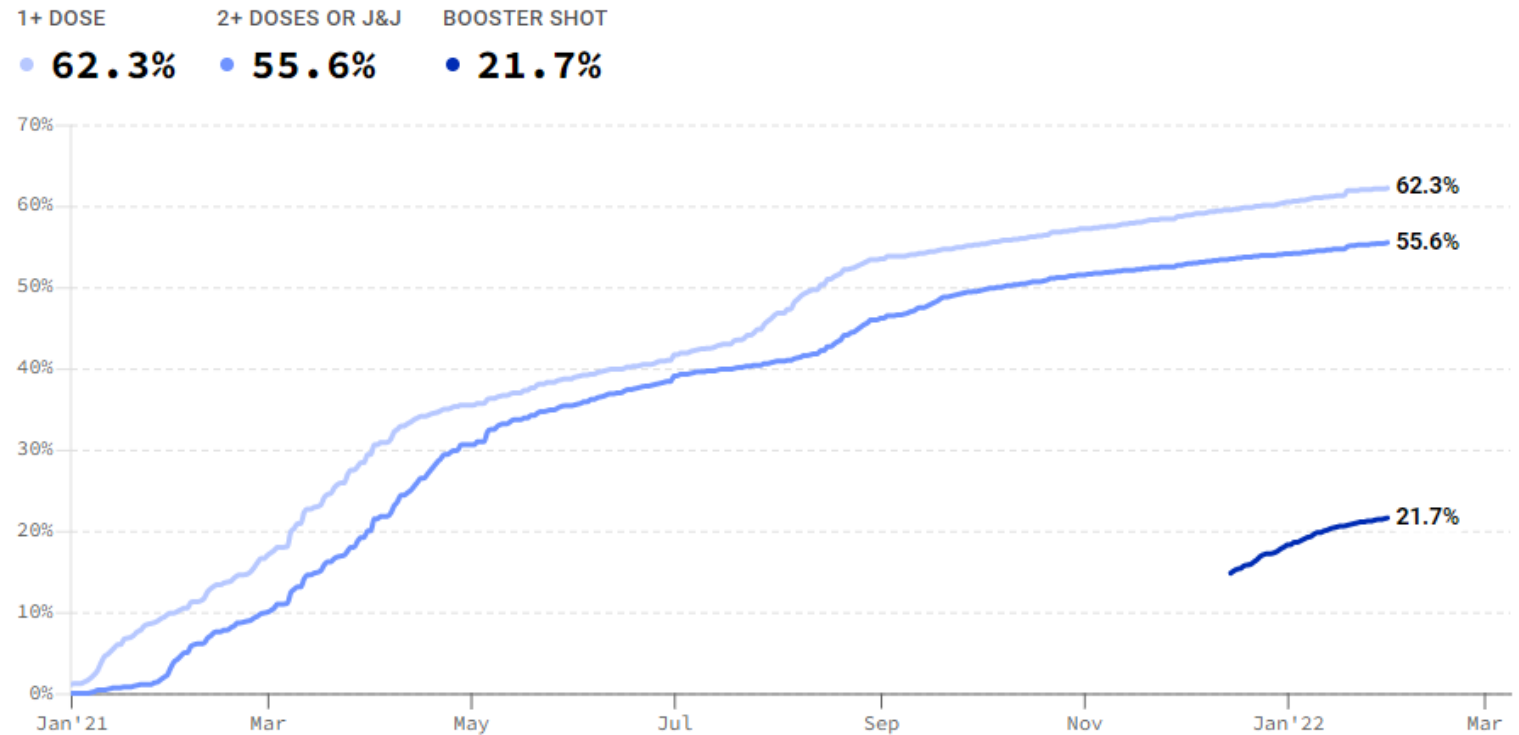


COVID-19 in St. Tammany

Vaccinations

As of January 31, 2022:

- **162,130** first doses of the COVID-19 vaccine have been administered.
 - **144,669** second doses have been administered (this number also includes single dose of the Johnson & Johnson vaccine)
- **56,511** third doses, or booster shots, have been administered.
- St. Tammany has the **9th** highest vaccination rate in the state.
- Louisiana ranks **43rd** out of 50 states in vaccination percentage.
- All Louisianans age 5 and older are eligible to be vaccinated.



Source: Louisiana Department of Health; St. Tammany Corporation Analysis



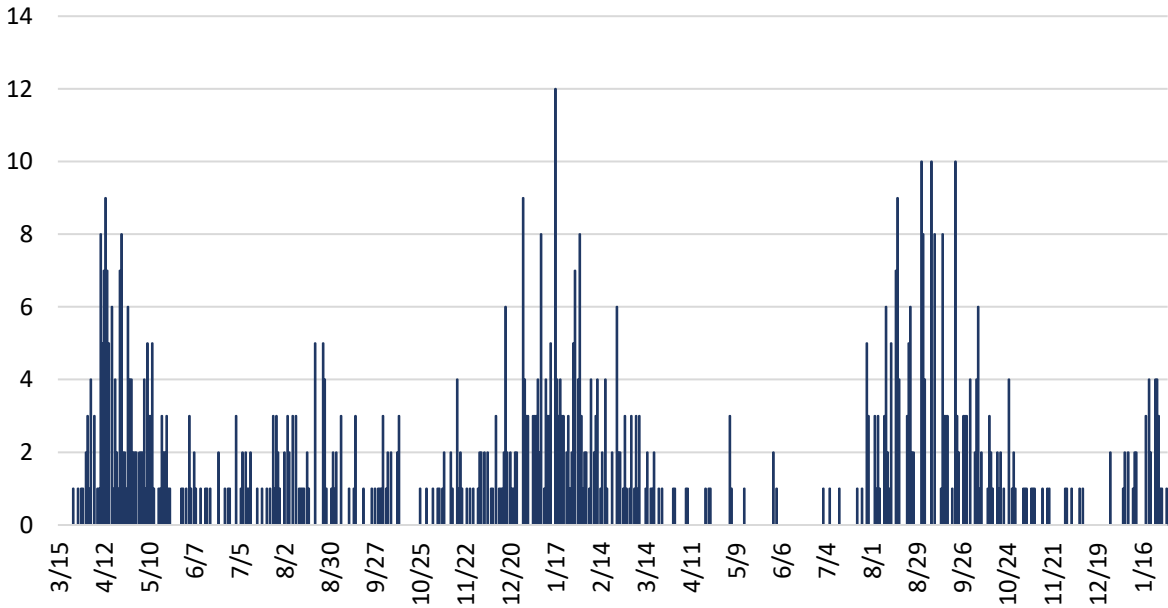
COVID-19 in St. Tammany

Total Mortality

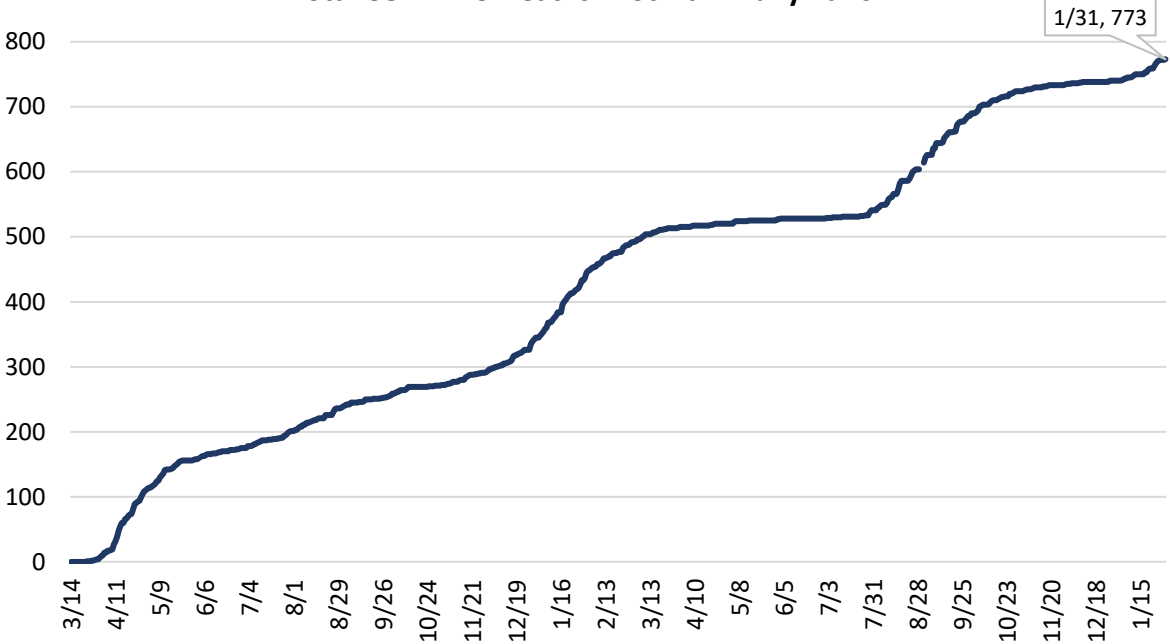
As of January 31, 2022:

- **773** deaths (725 confirmed + 48 probable)
- **1.5%** mortality rate (deaths as a proportion of confirmed cases).

Daily COVID-19 Deaths in St. Tammany Parish



Total COVID-19 Deaths in St. Tammany Parish



Demographic Breakdown			
Race	Deaths	Cases	Population (2018)
Black	94	10,893	29,803
White	675	46,262	209,123
Other	9	3,973	13,167
Unknown	0	6,731	N/A

Source: Louisiana Department of Health; St. Tammany Corporation Analysis



Unemployment Claims

Average number of initial claims for unemployment during January 2022:

72

Average number of initial claims for unemployment during January 2021:

432

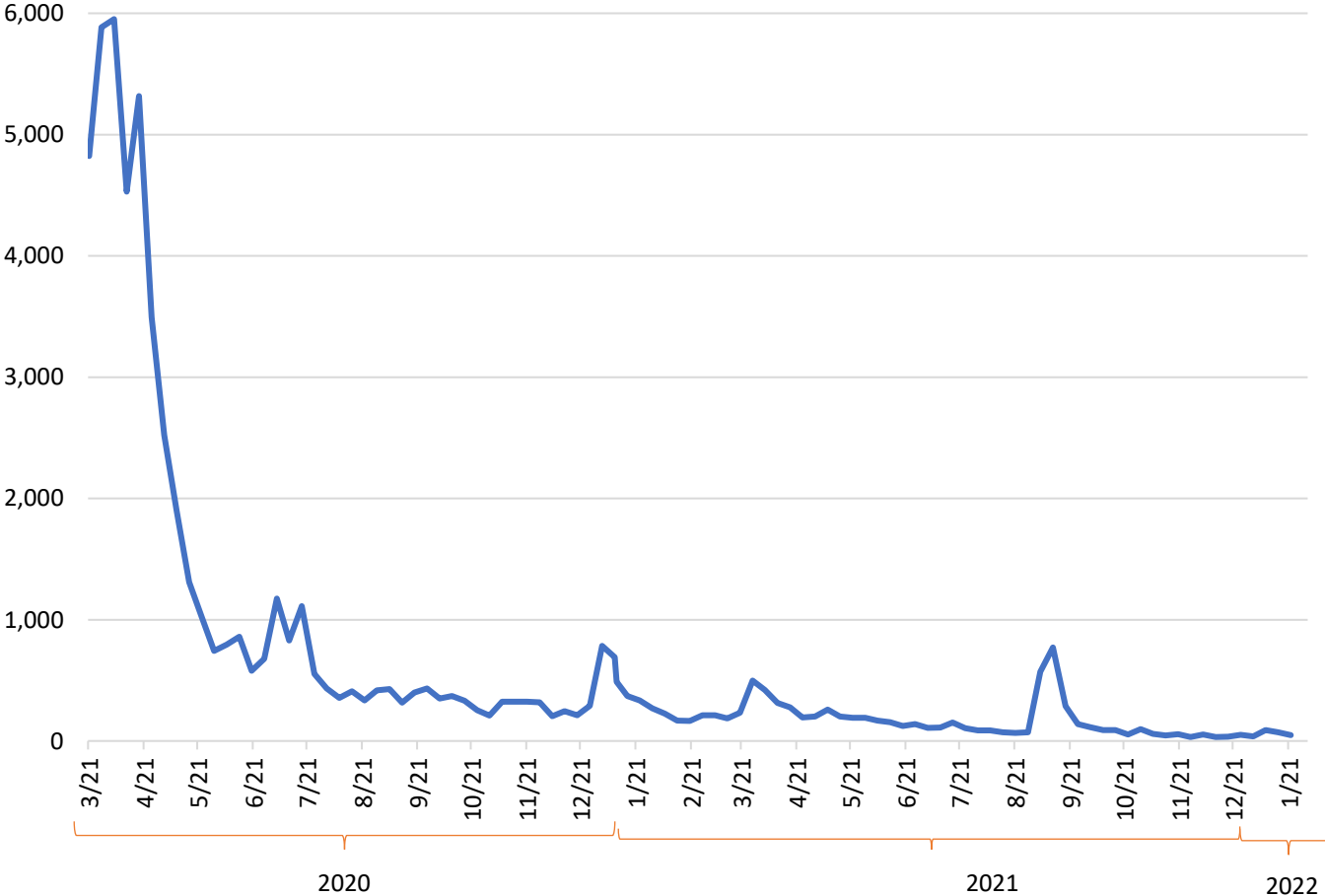
Average weekly number of initial claims, March-December 2020:

1,243

Average weekly number of initial claims, the year of 2021:

197

St. Tammany Initial Claims for Unemployment Insurance



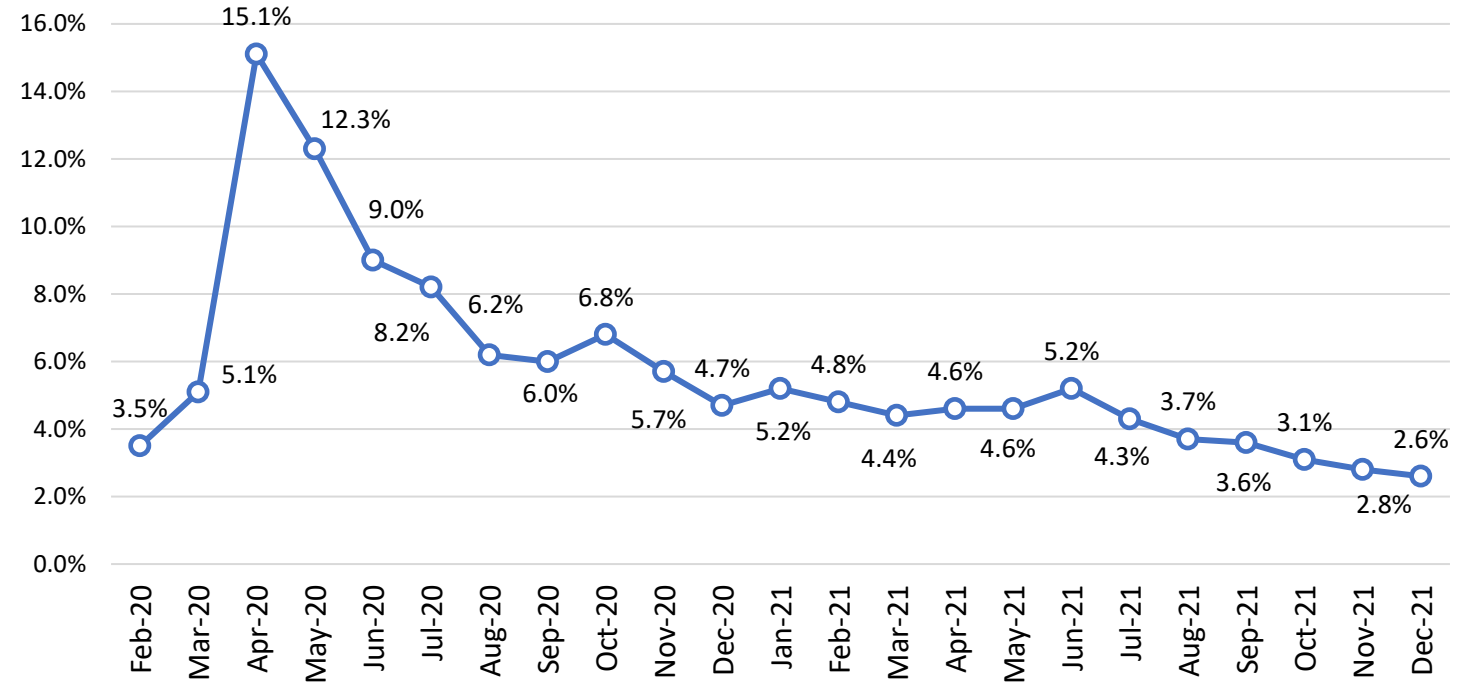
Source: Louisiana Workforce Commission



Unemployment Rate

- In the most recent jobs report, Louisiana Workforce Commission reported that St. Tammany's unemployment rate was **2.6%** in December 2021, lower than:
 - the United States rate (3.9%),
 - the Louisiana rate (4.8%),
 - and the Greater New Orleans rate (4.4%).
- December 2021 has shown the **lowest unemployment rate** since before the pandemic began (February 2020).
- In fact, St. Tammany Parish's December unemployment rate is the **lowest in recorded history**.

St. Tammany Unemployment Rate



Source: Louisiana Workforce Commission; Federal Reserve of St. Louis FRED

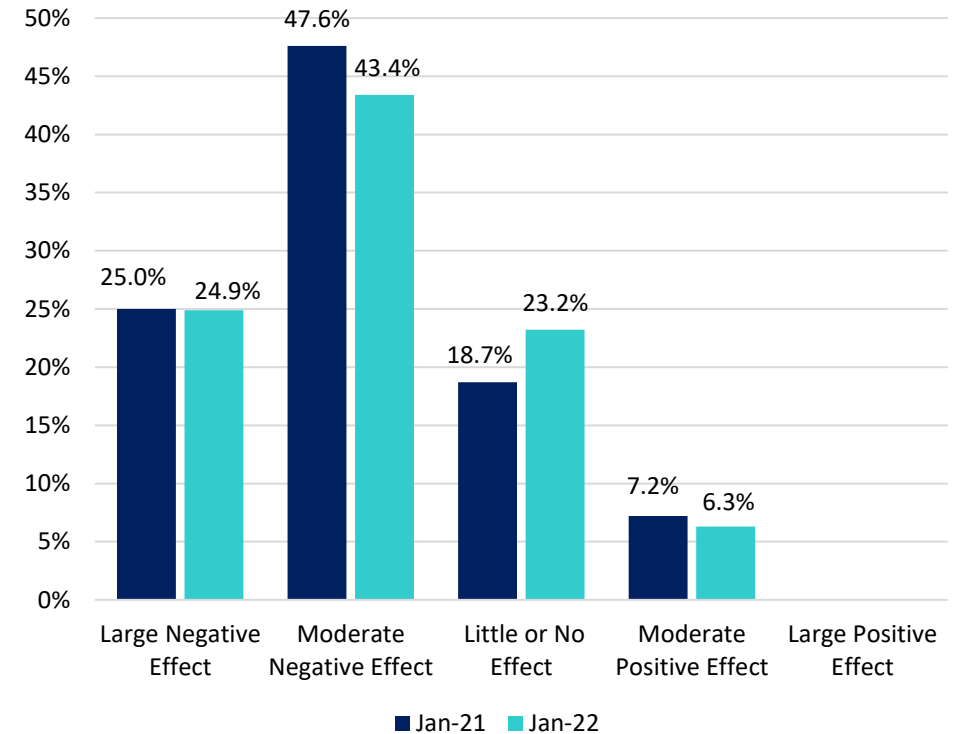


Small Business Pulse

Based on responses collected **January 10 through January 16, 2022**, the U.S. Census Bureau's Small Business Pulse Survey estimates that:

- **15.1%** of U.S small businesses required employee COVID-19 vaccination and **15.8%** required a negative COVID-19 test before physically coming to work in the last week
- **30.1%** of U.S small businesses experienced difficulties hiring paid employees in the last week. For responses collected 1/3-1/9/22, this statistic was **28.2%**
- **45.3%** of U.S small businesses experienced domestic supplier delays and **25.8%** experienced delays in delivery/shipping to customers in the last week
- **20.2%** of U.S educational services small businesses experienced a decrease in the number of hours worked by paid employees in the last week. For responses collected 1/3-1/9/22, this statistic was **28.4%**
- **36.2%** of U.S. accommodation and food services small businesses indicated that they will need to increase marketing or sales in the next 6 months. For responses collected 1/3-1/9/22, this statistic was **30.8%**

Overall, how has this business been affected by the COVID-19 pandemic (Louisiana)?



Source: United States Census Bureau Small Business Pulse Survey



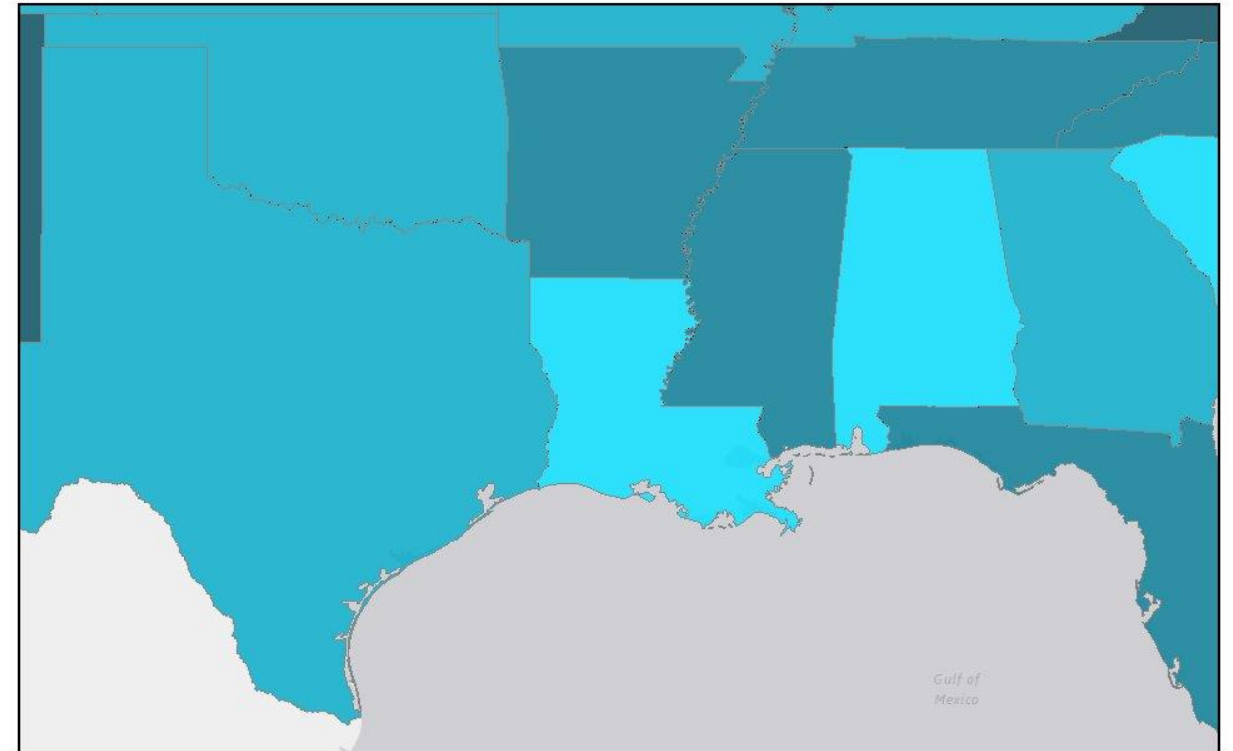
Household Pulse

Based on responses collected **December 29, 2021, through January 10, 2022**, the U.S. Census Bureau's Household Pulse Survey estimates that in Louisiana:

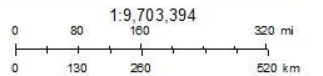
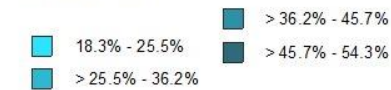
- **Childcare Disruptions (for kids 5 and under):** Of adults living in homes with children under 5, **19.5%** were in homes where children were unable to attend daycare/other childcare due to safety concerns in past 4 weeks
 - National Average: **37.9%**
- **Food Assistance for children:** Of adults living in households with children, **47.3%** were in homes where children received food assistance in the past 7 days
 - National Average: **38.2%**
- **Worked onsite at a workplace:** **54.1%** of adults lived in households where someone worked onsite at a workplace in the past 7 days
 - National Average: **53.7%**
- **Unable to Pay Energy Bill:** **31.2%** of adults lived in households that were unable to pay an energy bill in full in the last 12 months
 - National Average: **21.5%**
- **Child Tax Credit Spending:** Of adults living in households that received a Child Tax Credit payment in the past 4 weeks, **83.4%** either mostly spent it or used it to pay down debt
 - National Average: **78.7%**

Childcare Disruptions for Kids Under 5, Household Pulse Survey: Week 41

Adults in households where children under 5 were unable to attend daycare or another childcare arrangement in the last 4 weeks



February 4, 2022



Census Bureau
Esri, HERE, Garmin, (c) OpenStreetMap contributors, and the GIS user
Source: U.S. Census Bureau, Household Pulse Survey
Copyright US Census Bureau

Source: United States Census Bureau Household Pulse Survey



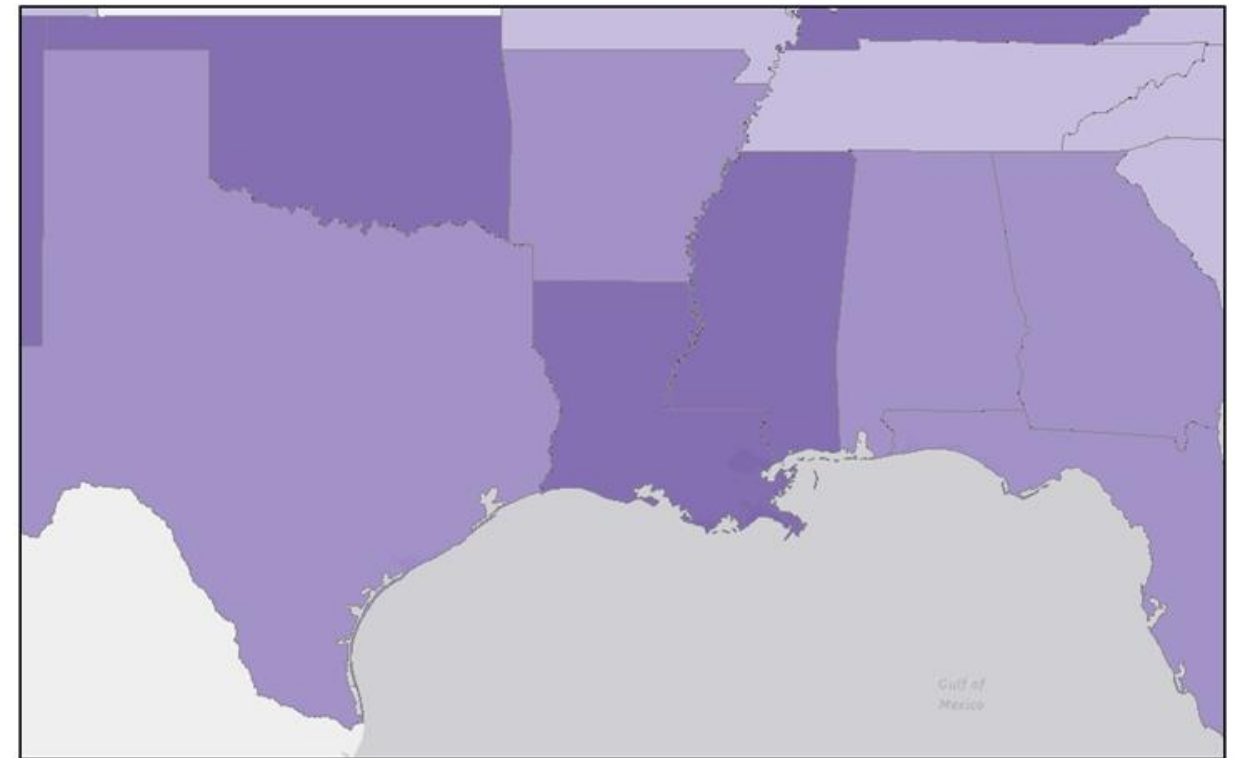
Household Pulse

Continued

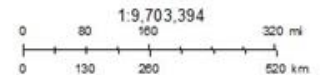
- Children's Telehealth:** Of adults living in homes with children, **16.5%** were in homes where children had an appointment with a doctor/nurse/other health professional by video or phone in the past 4 weeks
 - National Average: **15.6%**
- Household Telehealth:** **18.9%** of adults had an appointment with a doctor/nurse/other health professional by video or phone in the past 4 weeks
 - National Average: **20.1%**
- Food Scarcity:** **11.9%** of adults lived in homes where there was sometimes/often not enough to eat in the past 7 days
 - National Average: **10.2%**
- Eviction or Foreclosure:** Of adults living in households not current on rent/mortgage, **45%** report eviction or foreclosure in the next two months is somewhat/very likely
 - National Average: **35.5%**
- Difficulty with Household Expenses:** **38.3%** of adults live in households where it has been somewhat/very difficult to pay the usual household expenses in the past 7 days
 - National Average: **31.3%**

Difficulty Paying for Usual Household Expenses, Household Pulse Survey: Week 41

Adults in households where it has been somewhat or very difficult to pay for usual household expenses in the last 7 days



February 4, 2022



Census Bureau
 Esri, HERE, Garmin, (c) OpenStreetMap contributors, and the GIS User
 Source: U.S. Census Bureau, Household Pulse Survey
 Copyright US Census Bureau

Source: United States Census Bureau Household Pulse Survey



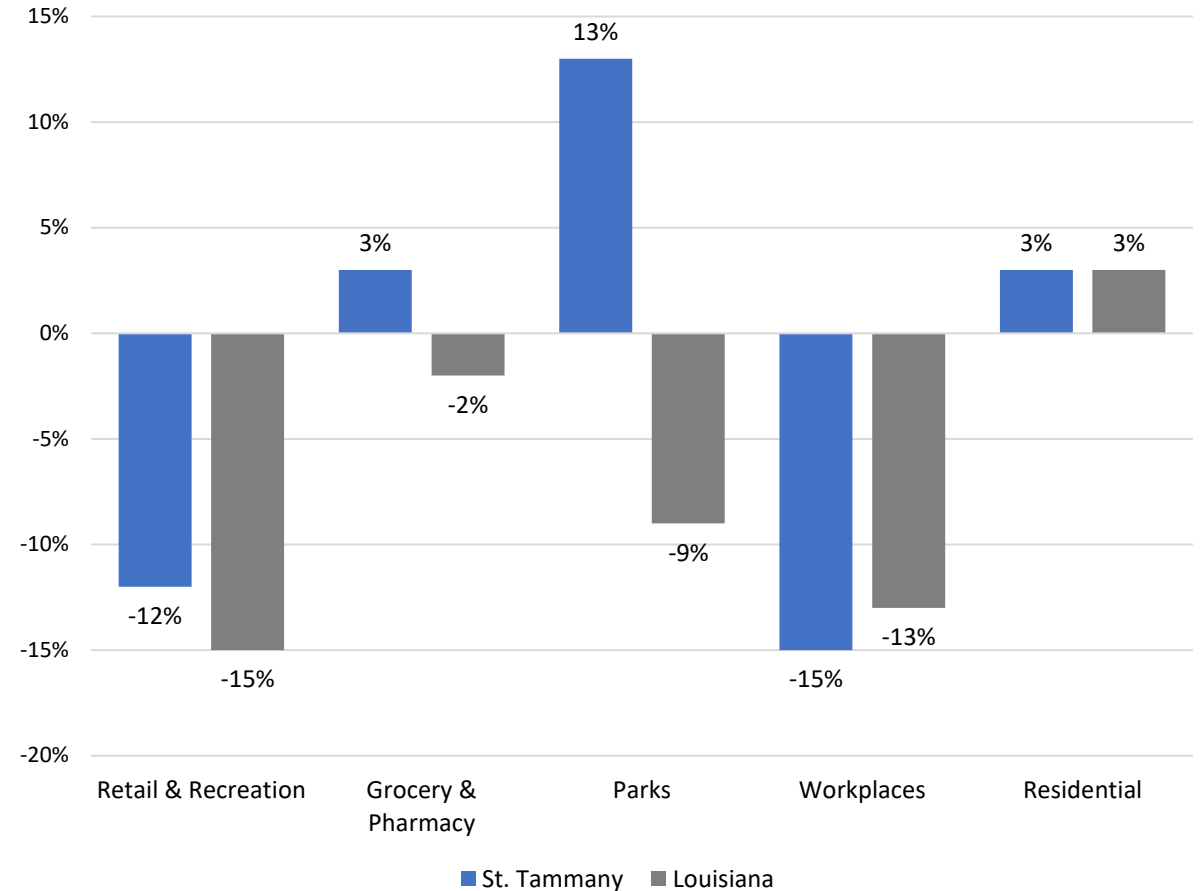
Residential Travel Since Stay-at-Home Order

Although the stay-at-home order is no longer in effect, people are still encouraged to limit their travel in order to stay safe. The purpose of the community mobility report is to give insight into key questions:

- How have travel and mobility in St. Tammany been impacted by the pandemic?
- How well has St. Tammany adhered to the stay-at-home order?
- Where are people going when they aren't going to work, going shopping, or doing leisure/entertainment activities?

Definitions:

- **Retail & Recreation:** places like restaurants, cafes, shopping centers, theme parks, museums, libraries, and movie theaters
- **Grocery & Pharmacy:** places like grocery markets, food warehouses, farmers markets, specialty food shops, drug stores, and pharmacies
- **Parks:** places like national parks, public beaches, marinas, dog parks, plazas, and public gardens
- **Workplaces:** places of work
- **Residential:** places of residence
- Negative percentages indicate reduction in travel

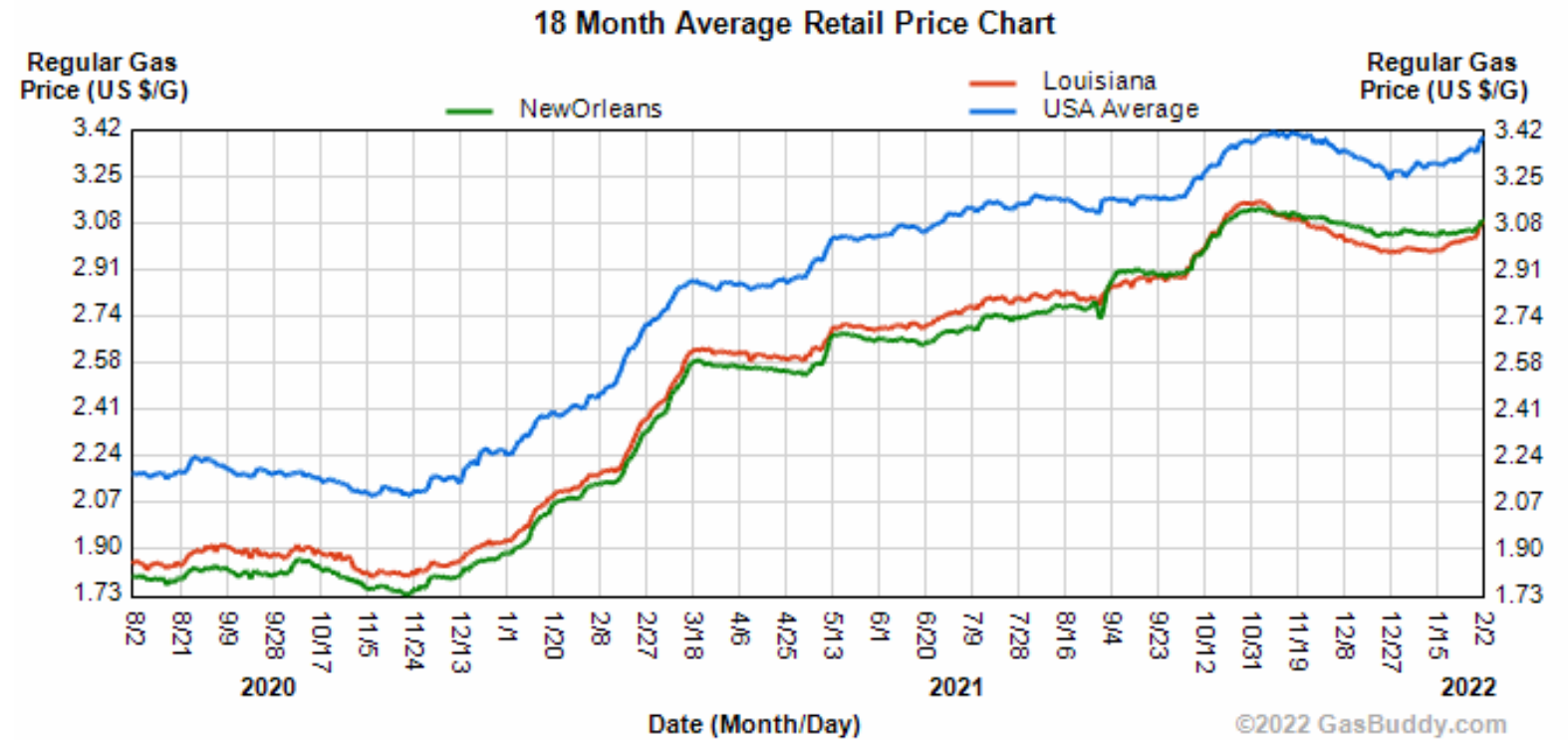


Source: Google | COVID-19 Community Mobility Report – January 2022



Gas Prices

- The graph to the right shows the average gas prices in the New Orleans metro, state, and nation over an 18-month period.
- Since the start of the COVID-19 pandemic, gas prices decreased due to low demand during stay-at-home ordinances. As the economy began to reopen, an increase in demand drove gas prices back up.
- During January 2022, there was an increase in gas prices despite a decrease in demand. This can primarily be attributed to weather conditions and the Omicron Variant preventing people from traveling.



Source: GasBuddy.com



Key Takeaways

- St. Tammany Parish recorded more than 18,000 new COVID-19 cases and 33 COVID-19-related deaths during January 2022 due to the newest and most contagious COVID-19 strain yet, the Omicron variant. However, it is interesting to note that on January 20th, there were 125 COVID-19 hospitalizations in St. Tammany Parish, the exact same number of hospitalizations on the same date in 2021.
- During January 2022 alone, there was about a 2% increase in number of residents who had received at least the first dose of the vaccine. There was a 3.6% increase in the number of booster shots received by residents since December 2021.
- In December 2021, St. Tammany's unemployment was reported to be the lowest ever recorded at 2.6%. This extraordinarily low rate is connected to the significant number of workers who have left the labor force during the pandemic, as well as the labor struggles that businesses across the country have seen in recent months.
- Small businesses nationally continue to experience labor and supply chain challenges, and in Louisiana, a significant percentage of households continue to struggle to meet usual household expenses such as rent/mortgage and childcare.
- As the most recent strain of the COVID-19 virus, the Omicron variant, caused cases to rise over 27% in just the month of January, it's clear that the pandemic will continue to affect workers, businesses, and our local and national economies further into 2022.





**ST. TAMMANY
CORPORATION**

The Economic Development Organization for St. Tammany

The **AnalyST**

St. Tammany Corporation's economic research publication



[@StTammanyCorporation](#)



[@StTammanyCorp](#)



[StTammanyCorp.org](#)

Prepared by:

Elizabeth Lee

Research & Policy Analyst

Project Associate for Strategic Initiatives

elee@sttammanycorp.org

Catherine Walker

Research Fellow

fellow@sttammanycorp.org